

## 100 Series stacked pump head only

- Very Compact
- Low Cost
- Various Tube Materials/Sizes
- 2 or 4 Rollers
- Integral Tube Grips

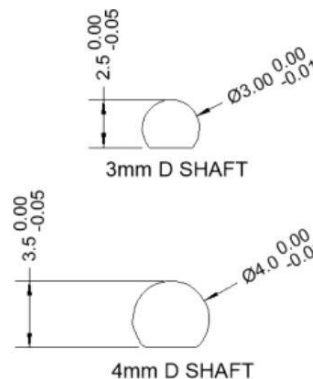
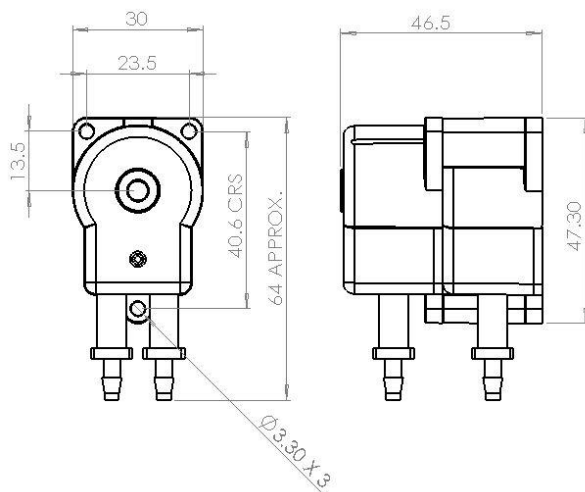


The micro range of 100 series stacked pumps offer a low cost, reliable means of dosing a wide variety of fluid. The pump is capable of pumping 2 different fluids in various ratios by using different tube materials/sizes on each pump head. They are available in various configurations such as: 2 or 4 roller, multiple tube materials & sizes giving flow rates between 0.016 and 0.26 ml/rev.

There are 3 options for driving the pumps:

- 1: Single 3mm D shaft going through both pumpheads.
- 2: 4mm D motor shaft driving the 1st pump head with a 3mm D coupling driving the second.
- 3: 3mm D motor shaft driving the 1st pump head with a 4mm D coupling driving the second (due to the torque loading on the 1st pump head "D" this should only be used with 2 roller pumps).

## DIMENSIONS (mm)



Option 1 (3mm D right though) shaft length:  
Minimum 31mm  
Maximum 46mm

Option 2 & 3 (3 or 4mm D driving 1st pump head) shaft length:  
Minimum 8mm  
Maximum 12mm

The Williamson Manufacturing Company Ltd provides no warranty on usage of pumps. We recommend that life tests be carried out prior to use. This information is given in good faith and believed to be correct at the time of publishing. The Williamson Manufacturing Company Ltd cannot accept responsibility for inaccuracy or any errors contained herein. Copyright the Williamson Manufacturing Company Ltd 2008.

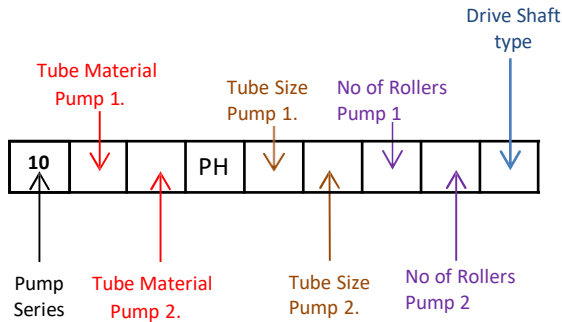


**Williamson Manufacturing Co Ltd**  
Unit 2, Centenary Industrial Estate  
Hughes Road  
Brighton  
East Sussex BN2 4AW UK  
Email: [sales@williamsonpumps.co.uk](mailto:sales@williamsonpumps.co.uk)

# 100 Series stacked pump head only



Devise your product code by using codes from the table on the right where stated below.



102-2-PH-030-016/2/2-4mm

Example product code for:

100 series stacked pump head fitted with Viton tubing in both pump heads, 3mm ID tubing in pump 1, 1.6mm tubing in pump 2, both pumps have 2 rollers and the pump heads are driven by a 4mm D shaft driving pump 1 with a 3mm D coupling driving pump 2.

	Product Code
<b>Tube Material</b>	
Silicone	0
Tygon® A60F Norprene	1
Viton®	2
Tygon Chemical® Norprene (3mm tube size only)	7
<b>Tube Size</b>	
0.8	-008
1.6	-016
3.0	-030
<b>Number of rollers</b>	
2	/2
4	/4
<b>Drive shaft type</b>	
3mm D shaft right through driving both pump heads	-RT
4mm D shaft driving 1st pumphead	-4mm
3mm D shaft driving 1st pumphead (2 roller only)	-3mm

## Materials of construction

Body & Back Plate	Rotor	Rollers
SAN	POM	Stainless Steel

## Flow Rates ml per revolution

No of Rollers	0.8mm ID Tube			1.6mm ID Tube			3.0mm ID Tube			
	SIL	A60F	Viton	SIL	A60F	Viton	SIL	A60F	Viton	Tygon Chemical
2	0.03	0.027	0.025	0.1	0.09	0.08	0.26	0.2	0.18	0.19
4	0.02	0.02	0.016	0.08	0.07	0.06	0.22	0.16	0.14	0.15

Flow rates for guidance only and subject to tube tolerance, tube age, fluid viscosity & back pressure.

The Williamson Manufacturing Company Ltd provides no warranty on usage of pumps. We recommend that life tests be carried out prior to use. This information is given in good faith and believed to be correct at the time of publishing. The Williamson Manufacturing Company Ltd cannot accept responsibility for inaccuracy or any errors contained herein. Copyright the Williamson Manufacturing Company Ltd 2008.



**Williamson Manufacturing Co Ltd**  
 Unit 2, Centenary Industrial Estate  
 Hughes Road  
 Brighton  
 East Sussex BN2 4AW UK  
 Email: [sales@williamsonpumps.co.uk](mailto:sales@williamsonpumps.co.uk)