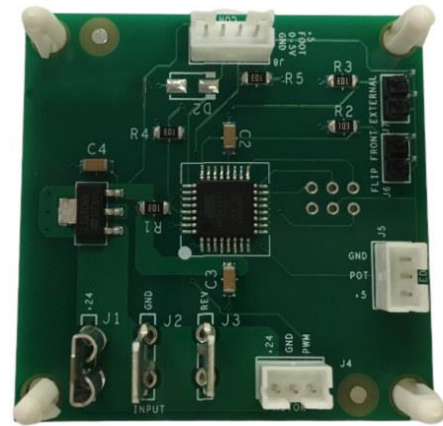


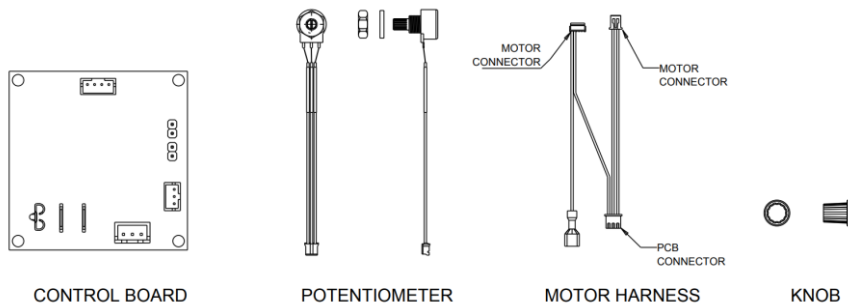
- Speed Control up to 20:1 via 0 to 5V DC input.
- Directional Control via contact closure
- Start/Stop via contact closure



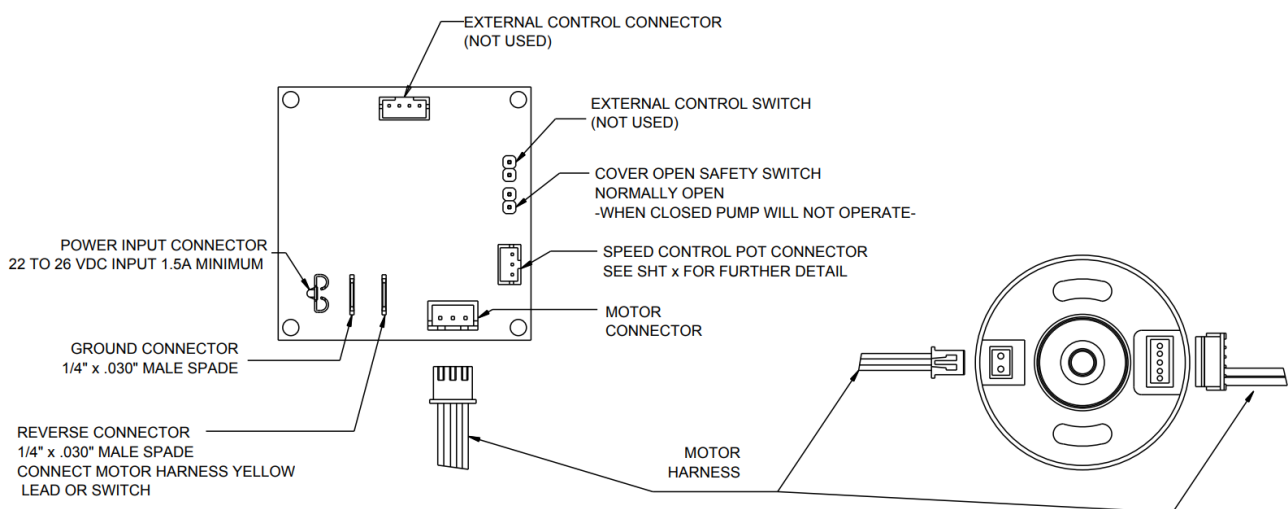
Description

PWM (pulse width modulation) controller designed for use with our 350 series OEM pumps with brushless DC motors. Includes motor wiring harness and speed control potentiometer.

KIT CONTENTS: 375Hz BRUSHLESS CONTROLLER



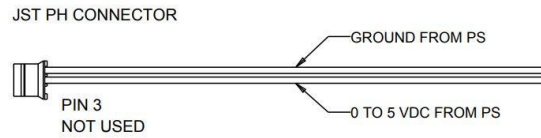
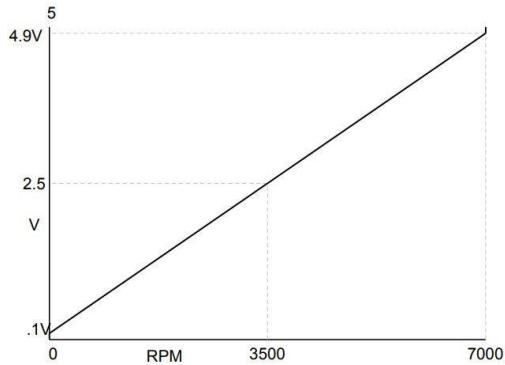
WIRING INSTRUCTIONS



The Williamson Manufacturing Company Ltd provides no warranty on usage of pumps. We recommend that life tests be carried out prior to use. This information is given in good faith and believed to be correct at the time of publishing. The Williamson Manufacturing Company Ltd cannot accept responsibility for inaccuracy or any errors contained herein. Copyright the Williamson Manufacturing Company Ltd 2008.

Williamson Manufacturing Co Ltd
Unit 2, Centenary Industrial Estate
Hughes Road
Brighton
East Sussex BN2 4AW UK
Email: sales@williamsonpumps.co.uk

SPEED CONTROL VIA 0-5 POWER SUPPLY COMPONENTS NOT SUPPLIED



0-.1v MOTOR IS OFF

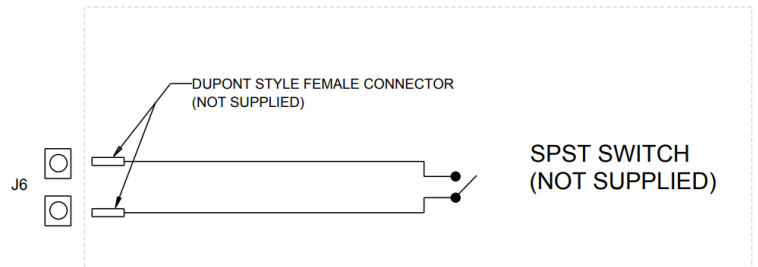
v>4.9 MOTOR IS FULL SPEED (7000 RPM)

MOTOR SPEED IS LINEAR AT 1v=1458 RPM

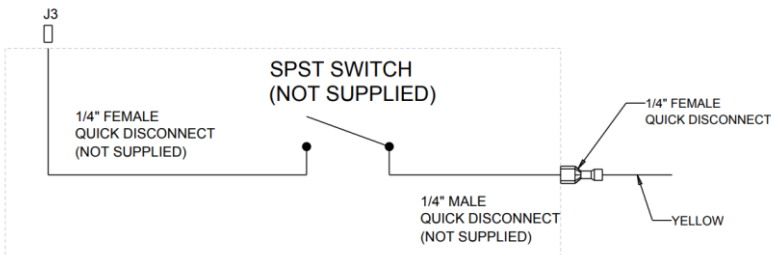
ON-OFF VIA SWITCH CLOSURE

SPEED CONTROL VIA POTENTIOMETER

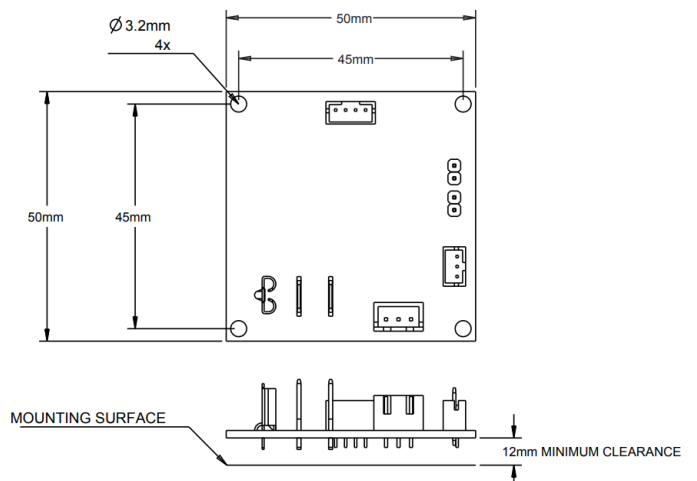
PLUG SUPPLIED POT INTO J5 ROTATE CW TO INCREASE SPEED



REVERSE VIA SWITCH CLOSURE



CONTROL BOARD MOUNTING DIMENSIONS



Part Number: 350- BLDC-PCB

The Williamson Manufacturing Company Ltd provides no warranty on usage of pumps. We recommend that life tests be carried out prior to use. This information is given in good faith and believed to be correct at the time of publishing. The Williamson Manufacturing Company Ltd cannot accept responsibility for inaccuracy or any errors contained herein. Copyright the Williamson Manufacturing Company Ltd 2008.

Williamson Manufacturing Co Ltd
Unit 2, Centenary Industrial Estate
Hughes Road
Brighton
East Sussex BN2 4AW UK
Email: sales@williamsonpumps.co.uk