

810 series with DC powered motor

Specification sheet 2021



- **Self-priming up to 8m**
- **Removable lid for tube changes**
- **Can handle a wide variety of viscosities.**

The 810 series peristaltic pumps are available in 12 or 24v DC motor options. They are capable of delivering flow rates as high as 987 ml/min, the pump heads are polycarbonate with stainless steel fasteners, self-priming up to 8m, run up to 20 psi (2.7 bar), are non-siphoning and can be run dry continuously.

The 810 peristaltic pumps can handle a wide variety of viscosities, from air and gases to heavy slurries, with a consistent positive displacement. It is available in 2 roller or 3 assemblies. These attach directly to the motor output shaft, delivering a precise amount of the product with each revolution.

Flow Rates

Number of rollers	4.8mm ID tube	6.4mm ID tube
2	2 mL per revolution	3.5 mL per revolution
3	1.75 mL per revolution	3.0 mL per revolution

Note: Flow rates are based on Silicone tubing and are approximate. Flow is effected by tube & component tolerances, back pressure & fluid viscosity.

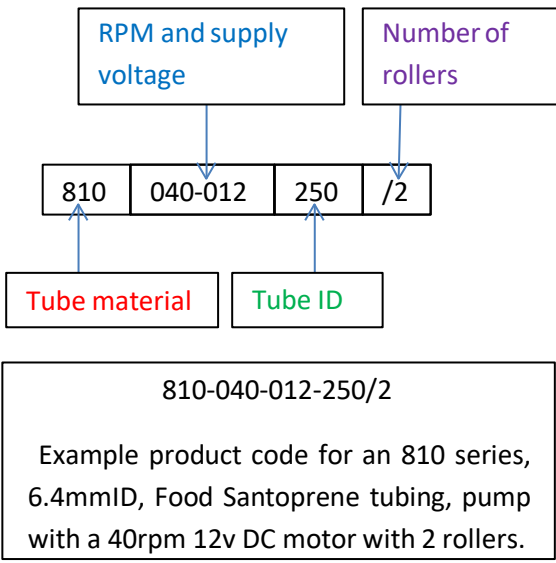
Santprene tubing will be approximately 5-10% less and Viton will be approximately 15-20% less.

To work out approx. flow per minute multiply the above figures by motor rpm.

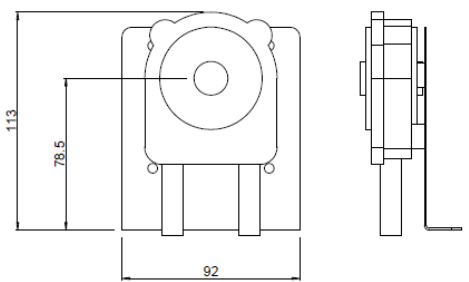
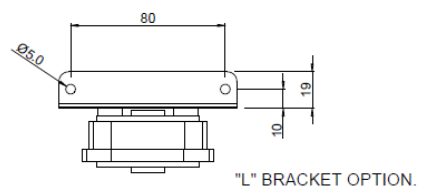
The Williamson Manufacturing Company Ltd provides no warranty on usage of pumps. We recommend that life tests be carried out prior to use. This information is given in good faith and believed to be correct at the time of publishing. The Williamson Manufacturing Company Ltd cannot accept responsibility for inaccuracy or any errors contained herein. Copyright the Williamson Manufacturing Company Ltd 2008.

Williamson Manufacturing Co Ltd
Unit 2, Centenary Industrial Estate
Hughes Road
Brighton
East Sussex BN2 4AW UK
Email: sales@williamsonpumps.co.uk

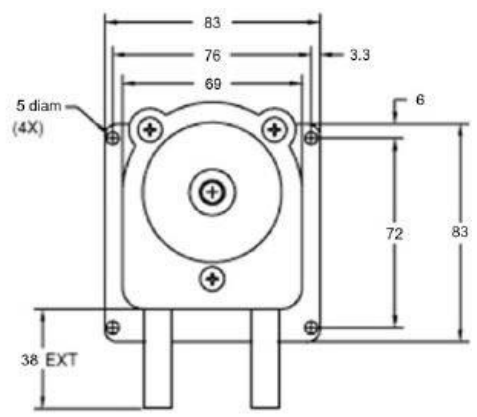
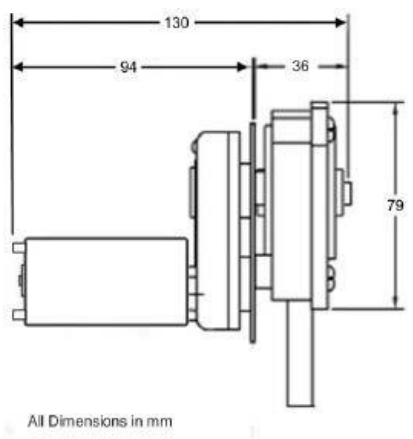
810 series with DC powered motor



Tube Material	Product code
Santoprene	810
Silicone	811
Viton (6.4 ID tube only)	812
RPM and voltage	
40 rpm 12v	040-012
40 rpm 24v	040-024
90 rpm 12v	090-012
90 rpm 24v	090-024
143 rpm 12v	143-012
143 rpm 24v	143-024
282 rpm 12v	282-012
282 rpm 24v	282-024
Tube ID	
4.8mm (not available in Viton)	187
6.4mm	250
Number of rollers	
2	/2
3	/3



Standard flat bracket.



The Williamson Manufacturing Company Ltd provides no warranty on usage of pumps. We recommend that life tests be carried out prior to use. This information is given in good faith and believed to be correct at the time of publishing. The Williamson Manufacturing Company Ltd cannot accept responsibility for inaccuracy or any errors contained herein. Copyright the Williamson Manufacturing Company Ltd 2008.

Williamson Manufacturing Co Ltd
Unit 2, Centenary Industrial Estate
Hughes Road
Brighton
East Sussex BN2 4AW UK
Email: sales@williamsonpumps.co.uk