

DP10 Diaphragm Pump

Key Features

- Positive displacement 3 chamber diaphragm pump
- Self priming (1.5m)
- Can run dry without damage
- Built in check valve prevents back flow in pump
- Chemically resistant materials
- Induction motor 230VAC. DP10-2 Pole.IP54.
- Net weight 3.8kg
- Intermittent duty motor - extended operation (Thermally Protected)
- Extensive range of fittings - Strainers, non return valves, accumulators
- Suitable for food and drink applications (EPDM models only)

Performance

- DP10 - 10 litres/min Open flow.
- Liquid temperatures < 54 deg C
- Max inlet pressure 30PSI
- Max running pressure 45PSI

Materials of construction

Wetted parts

Pump body & valve housing - Polypropylene

Valves - EPDM or Viton®

Diaphragm – Santoprene

Screws – Stainless Steel

Fittings

Shurflo swivel fittings self seal on pump, strainer and accumulator ports

Shurflo fittings are NSF approved materials

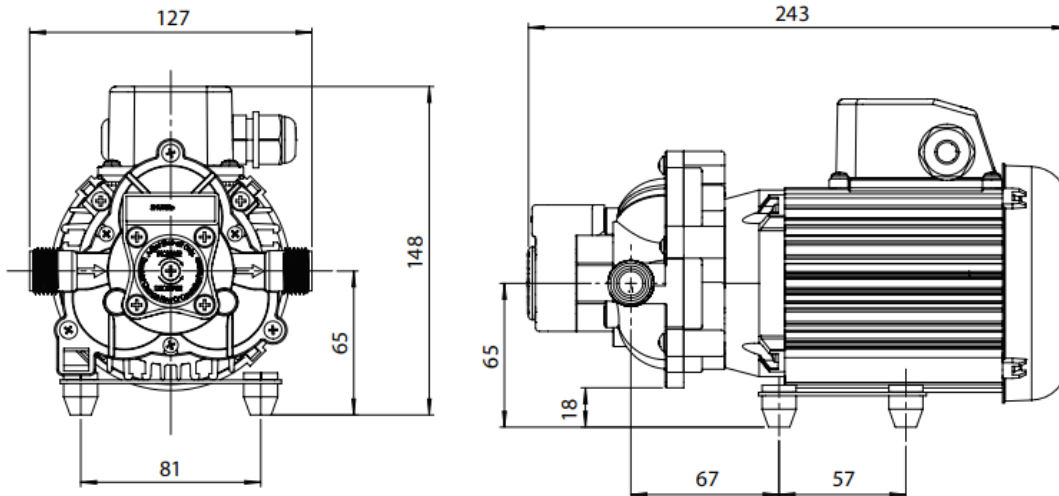
Swivel elbow adaptor (PP)		Swivel straight adaptor (PP)		Inlet strainers (PP)		
234-3916	3/8" Barb-1/2" NPT-F	234-2916	3/8" Barb-1/2" NPT-F	255-215	In 1/2" NPT Hex wing nut	Out 1/2" NPT Hex wing nut
234-3926	1/2" Barb-1/2" NPT-F	234-2926	1/2" Barb-1/2" NPT-F	255-225	In 1/2" Barb straight	Out 1/2" NPT Hex wing nut
234-3936	5/8" Barb-1/2" NPT-F	234-2936	5/8" Barb-1/2" NPT-F	Tee Barb x Barb Nylon		
234-3946	3/4" Barb-1/2" NPT-F	234-2946	3/4" Barb-1/2" NPT-F	244-4522		1/2" Barb - 1/2" Barb

DP10 Diaphragm Pump

Dimensions

- Inlet/outlet 1/2" NPT male parallel thread
- Supplied with 2m 3 core mains cable

Nominal dimensions in mm

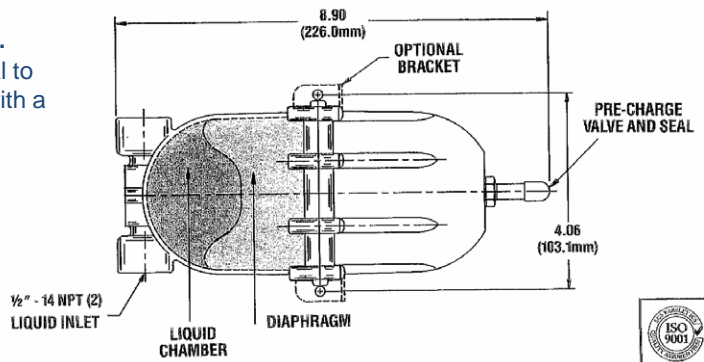


CE US
E218539

Accumulator - Needs to be adjusted.

The pre-charge (pre-set at 30 psi) should be equal to the pump re-start pressure and can be adjusted with a bicycle pump (schrader valve) & pressure gauge. Recommended pre-charge for various switch off pressures are:

- 16 psi switch pressure - 10 psi +/- 2 pre-charge.
- 20 psi switch pressure - 12 psi +/- 2 pre-charge.
- 30 psi switch pressure - 18 psi +/- 5 pre-charge.
- 45 psi switch pressure - 25 psi +/- 5 pre-charge.



Ordering options

DP10-E-230-NC 10L/min (open flow) EPDM valve with no control (see note).

DP10-V-230-NC as above but Viton® valve.

DP10-E-230-45-SW 10L/min (open flow) EPDM valve with 45 psi switch.

DP10-V-230-45-SW as above but Viton® valve.

182-200-Accumulator 30PSI

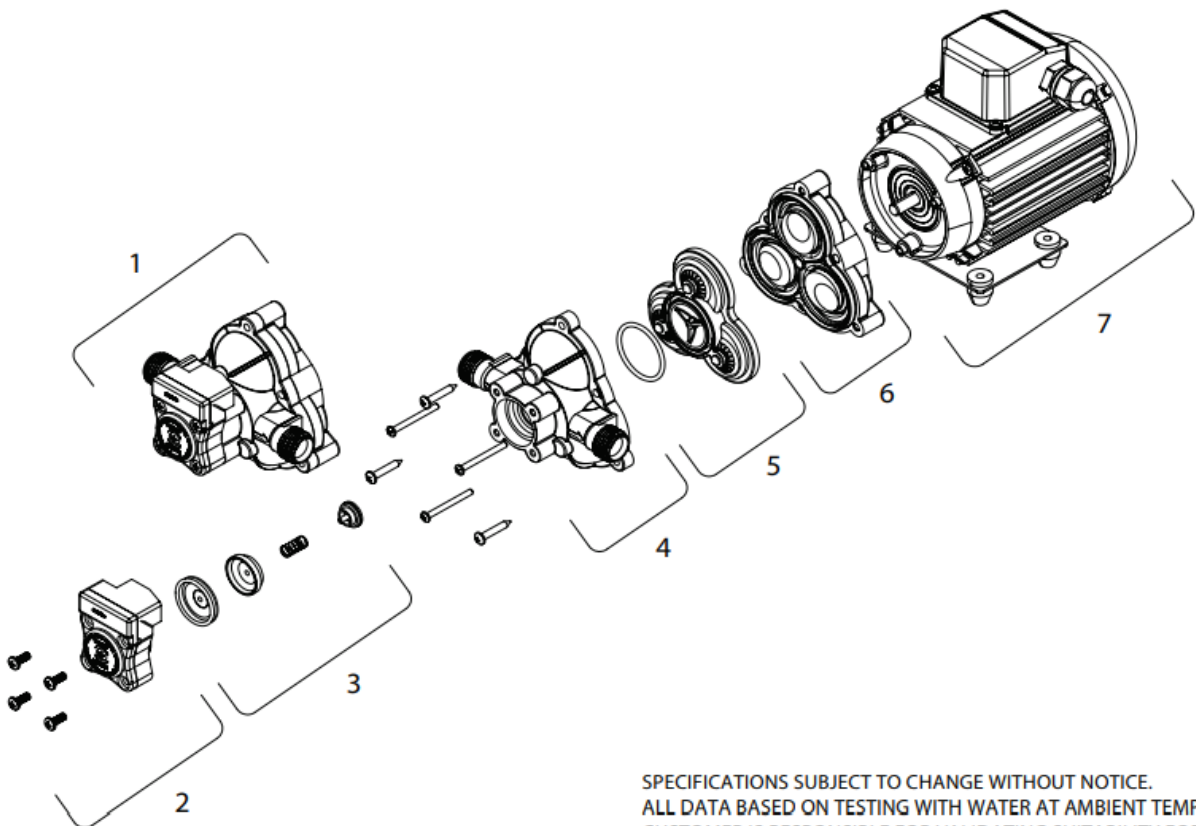
Note: Customer must provide their own control on all NC (no control) type pumps to ensure pump cannot be dead headed.

Williamson Manufacturing Co Ltd
Unit 2, Centenary Industrial Estate
Hughes Road
Brighton, East Sussex BN2 4AW UK
Email: sales@williamsonpumps.co.uk

DP10 Diaphragm Pump

Spares

ITEM	PART NUMBER	DESCRIPTION
1	94-236-08	Pump Head Kit
2	94-230-35	Pressure Switch
3	94-237-00	Check Valve
4	94-231-30	Upper Housing
5	94-232-06	Valve Kit (EPDM)
5	94-232-05	Valve Kit (Viton®)
6	94-238-04	Diaphragm/Drive
7	SF07-030	2 pole Motor for DP10



SPECIFICATIONS SUBJECT TO CHANGE WITHOUT NOTICE.
ALL DATA BASED ON TESTING WITH WATER AT AMBIENT TEMPERATURE.
CUSTOMER IS RESPONSIBLE FOR VALIDATING SUITABILITY FOR APPLICATION.

Williamson Manufacturing Co Ltd
Unit 2, Centenary Industrial Estate
Hughes Road
Brighton, East Sussex BN2 4AW UK
Email: sales@williamsonpumps.co.uk