

DP5 Induction Motor Diaphragm Pumps



Key Features

- Positive displacement 3 chamber diaphragm pump
- Self priming (1 metre)
- Can run dry without damage
- Chemically resistant materials
- Induction motor 230VAC. DP5 - 2 Pole.IP54.
- Net weight 4.25kg
- Continuous duty motor
- Extensive range of fittings - Strainers, non return valves, accumulators
- Suitable for food and drink applications (EPDM models only)

Performance

- 5 litres/min Open flow
- Liquid temperatures < 77 deg C
- Max inlet pressure 30PSI
- Max running pressure 135PSI

Materials of construction

Wetted parts

Pump body & valve housing - Nylon
 Valves - EPDM or Viton®
 Diaphragm – Santoprene
 Screws – Stainless Steel

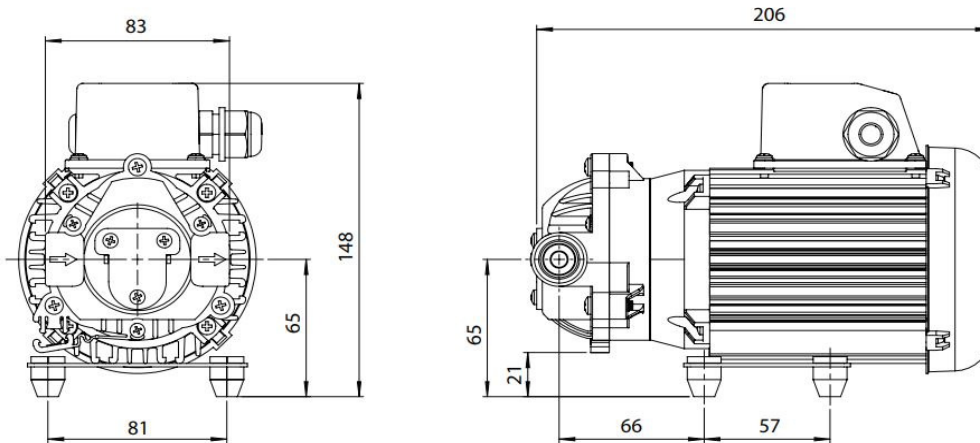
Fittings

Shurflo swivel fittings, strainer and adaptor.
 Shurflo fittings are NSF approved materials

Swivel elbow adaptor (PP)		Swivel straight adaptor (PP)		Inlet strainers (PP)		
234-3916	3/8" Barb-1/2" NPT-F	234-2916	3/8" Barb-1/2" NPT-F	255-215	In 1/2" NPT Hex wing nut	Out 1/2" NPT Hex wing nut
234-3926	1/2" Barb-1/2" NPT-F	234-2926	1/2" Barb-1/2" NPT-F	255-225	In 1/2" Barb straight	Out 1/2" NPT Hex wing nut
234-3936	5/8" Barb-1/2" NPT-F	234-2936	5/8" Barb-1/2" NPT-F	Adaptor to give 1/2" NPT Male thread		
234-3946	3/4" Barb-1/2" NPT-F	234-2946	3/4" Barb-1/2" NPT-F	244-5286		3/8" NPTF - 1/2" NPTM

DP5 Induction Motor Diaphragm Pumps

Dimensions



Nominal dimensions in mm
Drawing shows Bypass model

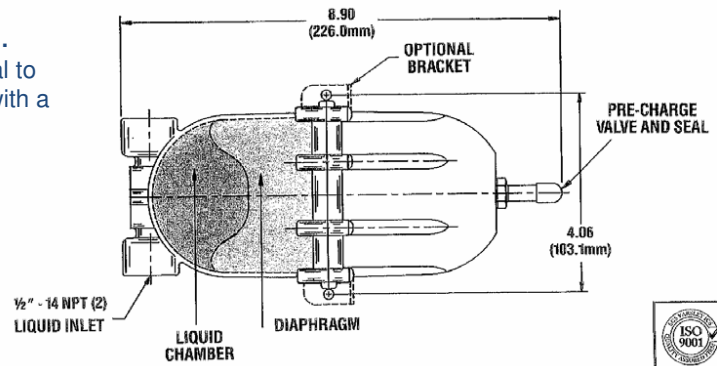
- Inlet/outlet 3/8" NPT female taper thread
- Supplied with 2m 3 core mains cable

CE **UL** **US**
E218539

Accumulator - Needs to be adjusted.

The pre-charge (pre-set at 30 psi) should be equal to the pump re-start pressure and can be adjusted with a bicycle pump (schrader valve) & pressure gauge. Recommended pre-charge for various switch off pressures are:

- 16 psi switch pressure - 10 psi +/- 2 pre-charge.
- 20 psi switch pressure - 12 psi +/- 2 pre-charge.
- 30 psi switch pressure - 18 psi +/- 5 pre-charge.
- 45 psi switch pressure - 25 psi +/- 5 pre-charge.



Ordering options

DP5-E-230IND-100-BP 5L/min (open flow) EPDM valve with internal bypass
DP5-V-230IND-100-BP as above but Viton® valve.

DP5-E-230IND-100-SW 5L/min (open flow) EPDM valve with 100 psi switch.
DP5-V-230IND-100-SW as above but Viton® valve.

182-200-Accumulator 30PSI

Note: Other pressure options are available on both switched & bypass models.

Williamson Manufacturing Co Ltd
Unit 5, Lady Bee Industrial Estate
Albion Street
Southwick, West Sussex BN42 4EP UK
Email: sales@williamsonpumps.co.uk

DP5 Induction Motor Diaphragm Pumps

Spare Parts:-

ITEM	PART NUMBER	DESCRIPTION
1	94-236-64	Pump Head Kit for -BP
2	94-380-05	Pump head Kit for -SW
3	94-379-01	Upper Housing- BP & SW
4	94-391-36	Valve Kit (EPDM) -BP
5	94-391-25	Valve Kit (Viton®) -BP
6	94-390-08	Valve Kit (EPDM) -SW
7	94-390-15	Valve Kit (Viton®)-SW
8	94-385-30	Diaphragm/Drive
9	SF07-030	2 pole Motor for DP5

Williamson Manufacturing Co Ltd
Unit 5, Lady Bee Industrial Estate
Albion Street
Southwick, West Sussex BN42 4EP UK
Email: sales@williamsonpumps.co.uk